



ILMATIETEEN LAITOS
METEOROLOGISKA INSTITUTET
FINNISH METEOROLOGICAL INSTITUTE

The industrial footprint on urban air quality – Finnish cities

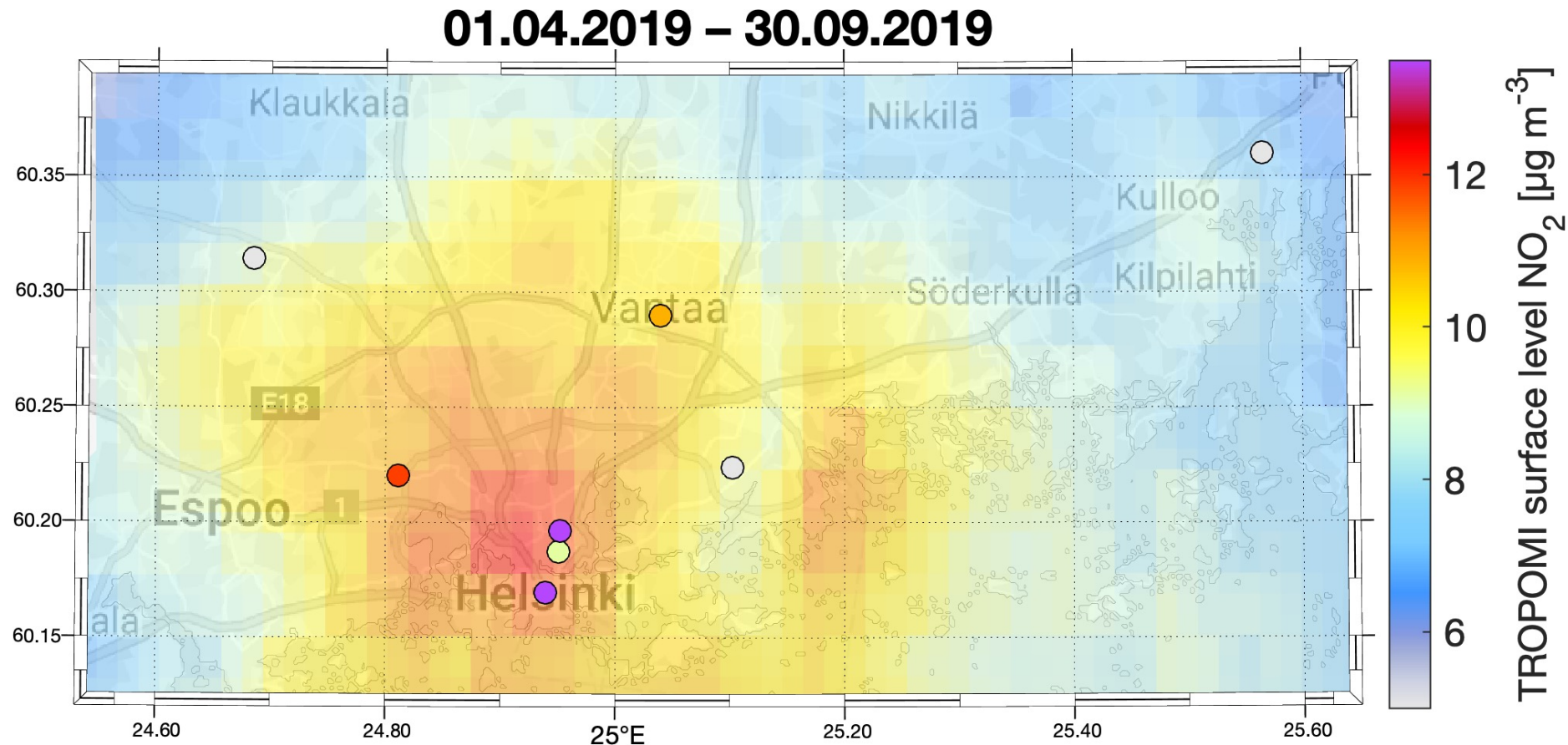
Iolanda Ialongo, Henrik Virta, Monika Szelaq

19.4.2022



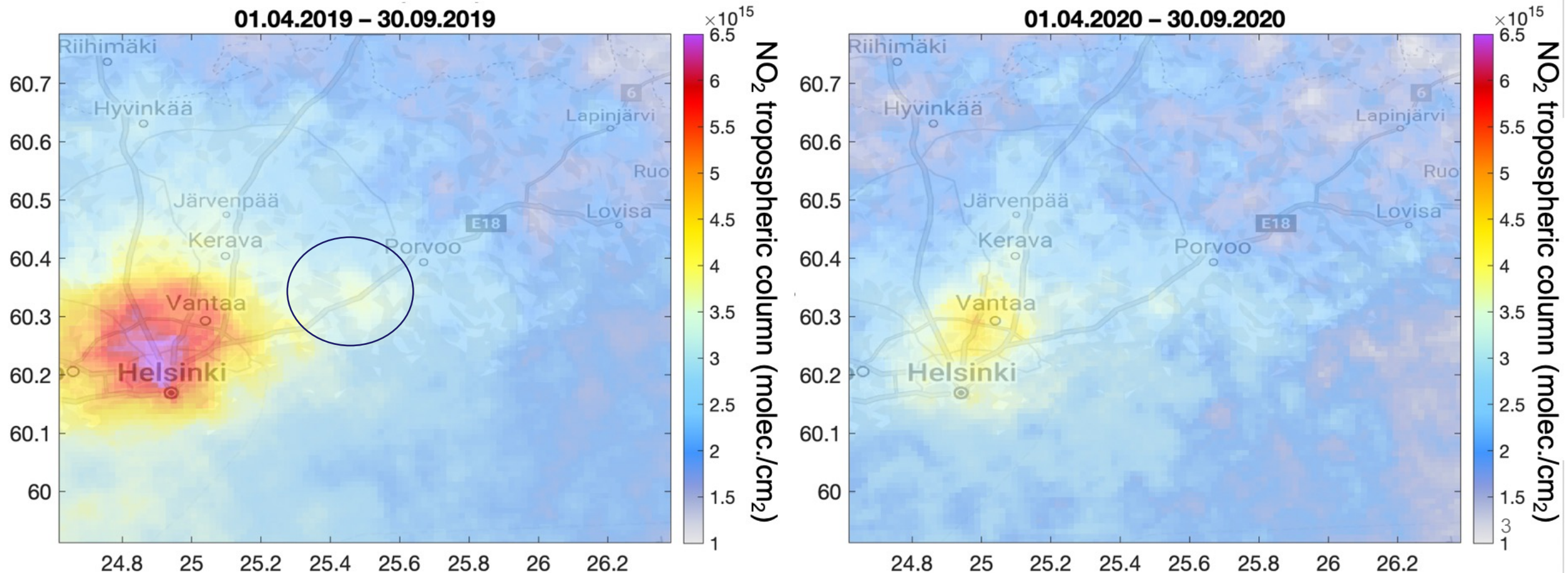
Finnish Ministry of Environment

- We converted TROPOMI NO₂ tropospheric columns into surface concentrations using chemical-transport model simulations
- Contributed to the assessment of Finnish AQ to the EU EEA



City of Porvoo and NESTE refineries

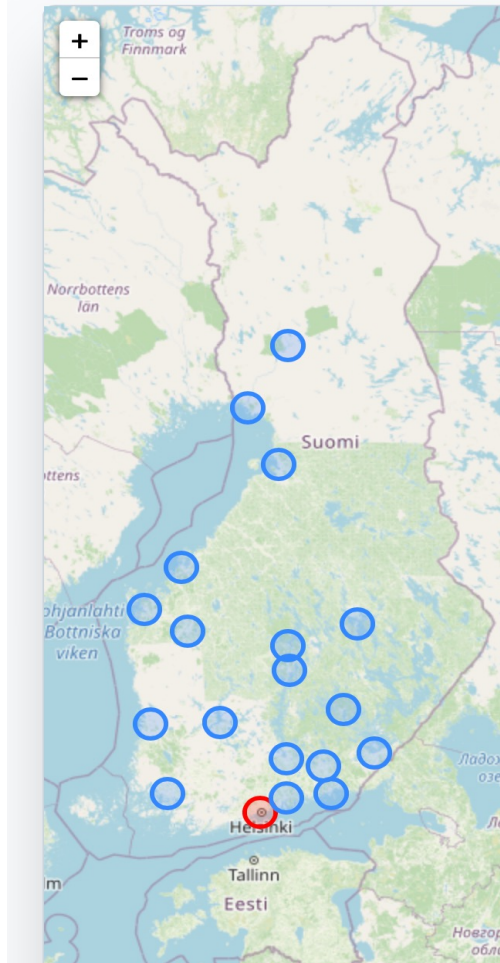
- Most of the polluting emission in Porvoo municipality is related to the NESTE oil refineries.
- Satellite-based NO₂ maps and time series used by the company NESTE (owners of the refineries in Porvoo) for their annual air quality and sustainability report.



Satellite-based NO2 map service

TROPOMI/S5P tropospheric NO2 maps over Finland

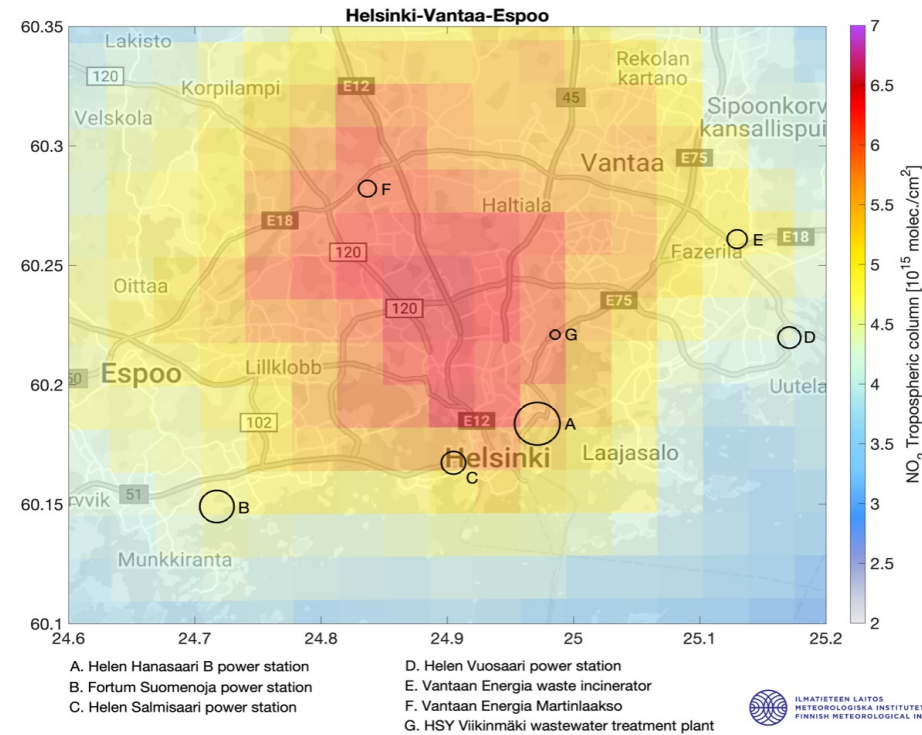
<https://sampo.fmi.fi/airpollution/no2/>



Helsinki-Vantaa-Espoo

Select area:

Helsinki-Vantaa-Espoo



Also part of the Service catalogue of the Balticsatapp project

<https://balticsatapps.eu/service-catalogue-maps-more-than-70-space-data-related-services-in-baltic-sea-region/>



ILMATIETEEN LAITOS
METEOROLOGISKA INSTITUTET
FINNISH METEOROLOGICAL INSTITUTE

Thank you

Contact: Iolanda Ialongo, iolanda.ialongo@fmi.fi
[@iolandaialongo](https://www.instagram.com/iolandaialongo)

<https://sampo.fmi.fi/airpollution/no2/>

